

December 23, 2022

**Subject: Upcoming Construction of Maple Canyon Restoration – Phases 1 & 2**

Dear Property Owner/Resident:

The City of San Diego will begin a project to replace 16 storm drain systems that empty into Maple Canyon in the coming months. This project also includes the installation of a new storm drain system downstream of Maple Canyon and the restoration of the Maple Canyon streambed. These drainage improvements will bring the infrastructure up to modern standards and reduce maintenance requirements. A location map illustrating the project area is enclosed with this notice.

Important information regarding this project:

- **Project name** – Maple Canyon Restoration – Phases 1 & 2
- **Construction schedule** – Construction is anticipated to occur between summer 2023 and fall 2025.
- **Construction days and hours** – Work on surface streets will take place Monday through Friday, 8:30 a.m. to 3:30 p.m. Work within the canyon will take place Monday through Friday, 7 a.m. to 4 p.m.
- **Construction notices** – Residents in and around the construction area will receive an informational door hanger delivered by the City’s contractor approximately five days before construction begins.
- **Street access and parking** – Temporary “No Parking” signs will be posted at least 72 hours before work begins, where required. **Vehicles in violation of signs will be towed.** Access to residences and businesses will be maintained.
- **Questions or concerns** – For information about the Capital Improvements Program, visit [www.sandiego.gov/cip](http://www.sandiego.gov/cip). For project-specific questions, contact the Engineering & Capital Projects Department at 619-533-4207 or email [engineering@sandiego.gov](mailto:engineering@sandiego.gov). Please reference “Maple Canyon Restoration – Phases 1 & 2” in your inquiry.
- **Español** – Para informes en español sobre este proyecto, por favor comuníquese al 619-533-4207, oprima el botón número 9 cuando la grabación se lo indique, y mencione “Maple Canyon Restoration – Phases 1 & 2” en su comunicación.

Thank you for your patience and cooperation during the construction of this important improvement project.

Sincerely,

*Daniel Yelsits*

Daniel Yelsits, PE  
Project Manager





# Engineering & Capital Projects

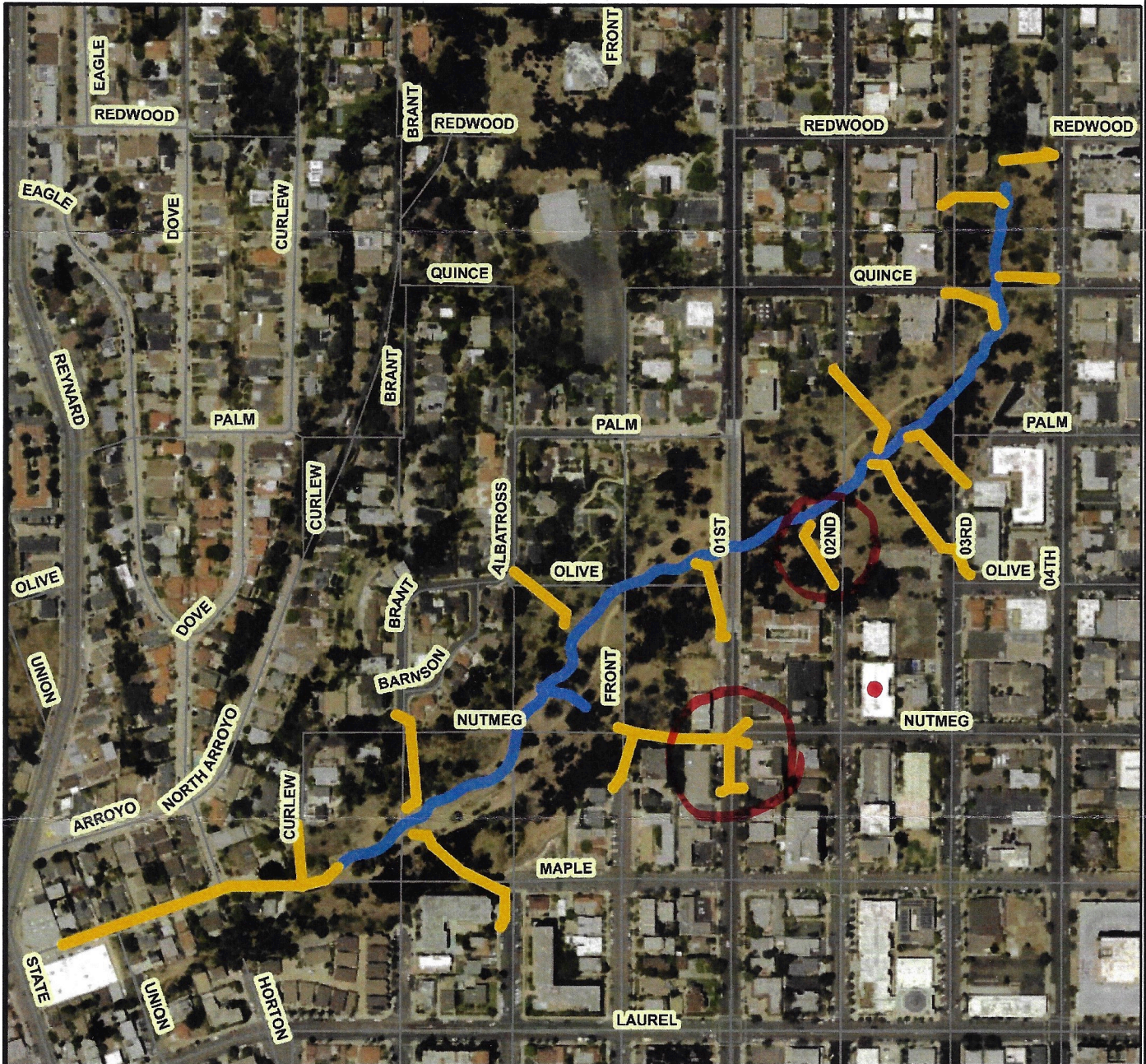
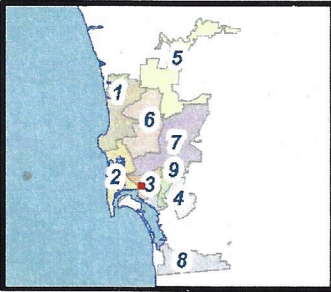
## MAPLE CANYON RESTORATION - PHASES 1 & 2 LOCATION MAP

SENIOR ENGINEER  
ELHAM LOTFI  
619-533-5212

PROJECT MANAGER  
DANIEL YELSITS  
619-533-5215

PROJECT ENGINEER  
YAMELL BALCAZAR  
619-533-5652

FOR QUESTIONS ABOUT THIS PROJECT  
Call: (619) 533-4207  
Email: [engineering@sandiego.gov](mailto:engineering@sandiego.gov)



### Legend

Proposed Storm Drain    Streambed Restoration



THIS MAP/PATA IS PROVIDED WITHOUT WARRANTY OF ANY KIND, EITHER EXPRESS OR IMPLIED, INCLUDING, BUT NOT LIMITED TO, THE IMPLIED WARRANTIES OR MERCHANTABILITY AND FITNESS FOR A PARTICULAR PURPOSE. Note: This product may contain information reproduced with permission granted by RAND McNALLY & COMPANY to SanGIS. This map is copyrighted by RAND McNALLY & COMPANY. It is unlawful to copy or reproduce all or any part thereof, whether for personal use or resale, without the prior, written permission of RAND McNALLY & COMPANY.