

**Subject: Maple Canyon Restoration Project (Phase 1 and 2)**

October 29, 2019

Dear Resident/Property Owner:

The City of San Diego is sending this letter to update you on the Maple Canyon Restoration Project (Phase 1 and 2). A location map illustrating the project area and a fact sheet are enclosed with this notice. This project has two phases:

- **Phase 1** will replace the 16 existing storm drain systems that feed into Maple Canyon to ensure that they meet current City of San Diego drainage design requirements. The drainage discharge points will be relocated to be as close as possible to the canyon flowline to minimize future erosion of the canyon slopes. This phase also includes the installation of a new storm drainage system at the downstream end of the canyon to capture runoff before it flows into Maple Street. The project also includes repairing and revegetating the eroded canyon slopes, where impacted by the storm drain systems.
- **Phase 2** will stabilize the floor of Maple Canyon from severe erosion and sediment loss. The project also includes the replacement of impacted vegetation along the canyon floor.

**Project Schedule:**

- **Phase 1** is currently finishing design. Construction is anticipated from spring 2021 to fall 2022.
- **Phase 2** is beginning design. Construction is anticipated from spring 2021 to fall 2022.

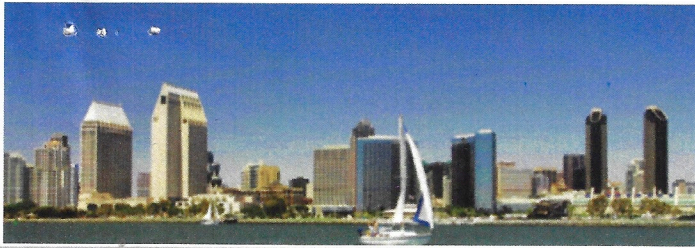
**Community Presentations:** There are two upcoming informational presentations focused on Phase 1 that you are invited to attend:

- **Bankers Hill Community Group:**  
November 18, 2019 at the Bankers Hill Clubhouse (3030 Front Street) at 6:30 p.m.
- **Uptown Planners:**  
December 2, 2019 at the Joyce Beers Community Center (3900 Vermont Street) at 6:00 p.m.

**Additional Notices:** A notice will be sent within the next two weeks to property owners who may be directly impacted by the construction of this project. Additional coordination with these residents will be required. Prior to any construction, a notification letter will be sent out to all properties in a 300' radius from the improvement project.

If you have any questions or concerns, please contact me directly at (619) 533-5212 or [elotfi@sandiego.gov](mailto:elotfi@sandiego.gov). On behalf of the project team, we thank you for your patience and cooperation as we complete the design of this important project.

Elham Lotfi  
Project Manager  
City of San Diego, Public Works Department



The City of



Public Works Department

FACT SHEET

## Maple Canyon Restoration – Phase 1 and 2

### Background

Maple Canyon is in the San Diego community of Bankers Hill, which is located between Interstate 5 and State Route 163. In addition to being one of the City's urban canyons, it is the collection point for approximately 100 acres of mixed-use runoff via 16 storm drain systems that feed into the canyon. Over the years, development of the area surrounding Maple Canyon has led to increased water runoff into the canyon, leading to significant erosion. The existing storm drain systems were not adequately sized to accommodate this increased runoff or to prevent it from bypassing the drainage systems. This has led to the failure of many existing drainage systems and the subsequent erosion of Maple Canyon.

### Project Overview

**Phase 1** of the project is currently nearing the end of the design phase. This project provides for the replacement of 16 existing storm drain systems that feed into Maple Canyon, as well as installing a new storm drain system at the downstream end of the canyon to capture a portion of the runoff before it enters Maple Street. The drainage discharge points will be relocated to be as close to the canyon flowline as possible to effectively minimize erosion of the canyon slopes. The project will:

- Replace or upgrade existing drainage systems to meet current City of San Diego drainage design requirements.
- Relocate drainage outfalls to minimize erosion of the canyon slopes.
- Install a new storm drain system at the downstream end of the canyon to effectively capture runoff before it flows into Maple Street.
- Repair and revegetate eroded canyon slopes.
- Replace curb ramps, pavement, street surfacing, etc. wherever storm drain replacement occurs.

**Phase 2** of the project will restore the bottom of the canyon by repairing severe erosion and sediment loss that occurred as a result of the increased runoff. Both projects aim to reduce the sedimentation of the canyon by improving the drainage systems and stabilizing the canyon floor.

### Project Schedule

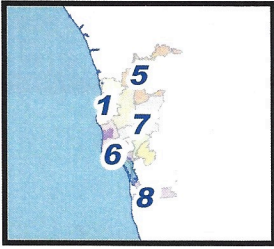
**Phase 1:** Anticipated Construction: spring 2021 – fall 2022\*

**Phase 2:** Anticipated Construction: spring 2021 – fall 2022\*

*\*All dates are approximate and subject to change.*



# Maple Canyon Restoration - Phase 1 and 2



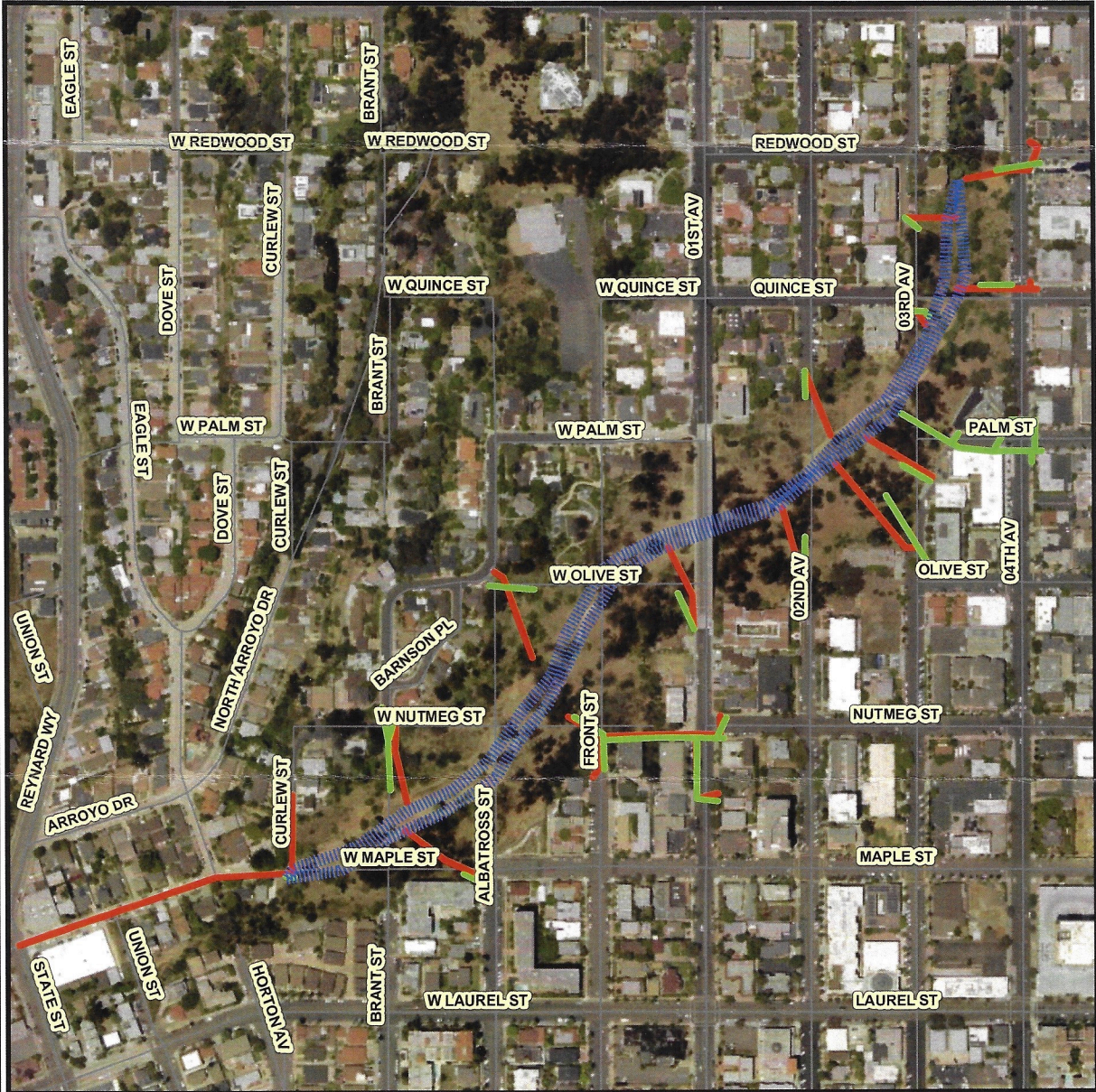
The City of **SAN DIEGO** Public Works

## Maple Canyon Restoration - Phase 1 and Phase 2

<b>SENIOR ENGINEER</b> Sheila Bose (619) 533-4698	<b>PROJECT MANAGER</b> Elham Lotfi (619) 533-5212	<b>PROJECT ENGINEER</b> Barez Piomari (619) 533-5474	<b>FOR QUESTIONS ABOUT THIS PROJECT</b> Call: 619-533-4207
---	---	--	---

Email: [engineering@sandiego.gov](mailto:engineering@sandiego.gov)

THIS MAP/DATA IS PROVIDED WITHOUT WARRANTY OF ANY KIND, EITHER EXPRESS OR IMPLIED, INCLUDING, BUT NOT LIMITED TO, THE IMPLIED WARRANTIES OR MERCHANTABILITY AND FITNESS FOR A PARTICULAR PURPOSE. Note: This product may contain information reproduced with permission granted by RAND McNALLY & COMPANY to SanGIS. This map is copyrighted by RAND McNALLY & COMPANY. It is unlawful to copy or reproduce all or any part thereof, whether for personal use or resale, without the prior, written permission of RAND McNALLY & COMPANY.



- Phase\_2
- Existing\_Storm\_Drain\_Phase 1
- Proposed\_Storm\_Drain\_Phase 1



COMMUNITY NAME: UPTOWN  
Date: October 18, 2019

COUNCIL DISTRICT: 3

SAP ID: B12040 (SD)

